

# TSE

STREET HUNTER

AGILITY, SPEED, SPORTY, GREEN.



  
VMOTO  
ELECTRIC VEHICLES

VMOTO  
  
ELECTRIC MOBILITY SOLUTION

# Index

- 4 Design
- 10 Performance
- 12 Battery
- 14 Cycling
- 16 Safety
- 18 Technology
- 20 Ergonomics
- 22 Optional parts
- 23 Vmoto battery technology
- 24 Technical information



# DESIGN

## Urban style, sporty soul

The **TS Street Hunter S** have **bold, modern design**, created to stand out in the urban landscape. **Muscular lines**, a **compact silhouette**, and a **sporty stance convey energy and motion** even at a standstill.

Attention to detail, including **full LED lighting** and **high-quality finishes**, enhances its sharp, contemporary look.



# DESIGN

## Aerodynamics

**TS Street Hunter S** is a perfect example of how **aerodynamics can integrate with design to deliver superior performance and an exciting riding experience.**

Featuring a **double fairing**, the bike significantly **reduces aerodynamic drag, improving stability and smoothness** even at high speeds. This innovative solution, combined with a **compact design**, contributes to **outstanding handling**, making the motorbike particularly suitable for those **seeking fun and control in every corner.**

Its advanced aerodynamics ensure not only excellent performance, but also **optimised energy efficiency for an engaging and sustainable driving experience.**



# DESIGN

Front



Side



Back



# PERFORMANCE

**105** Km/h  
Max speed

**230** Nm  
Max torque

**10.0** kW  
Max power

**4.0** kW  
Rated power

**4** Riding modes  
45 Km/h - 65 Km/h  
85 Km/h - 105 Km/h

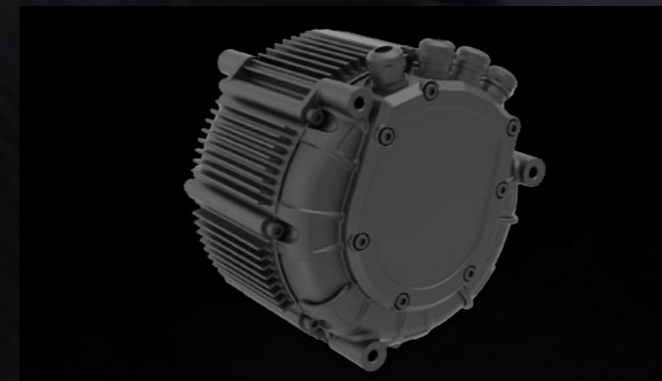


## Enhanced performance

The **TS Street Hunter S** is built for riders who demand more from their urban electric motorcycle.

With a **top speed of 105 km/h** and an impressive **230 Nm of torque**, it delivers responsive acceleration and confident handling. Its motor offers a **nominal power of 4.0 kW** and **peaks at 10.0 kW**, managed by the advanced **F.O.C. 3.0 controller**, which boosts power output by **16%** compared to previous versions. **4 riding modes** allow you to tailor performance to your style and riding conditions.

High power motor



F.O.C. 3.0



# BATTERY

## Range & efficiency

TS Street Hunter S is equipped with **74V30Ah** batteries, engineered to deliver an optimal balance of **range, efficiency, and charging speed**. Offer up to **100 km** of range with 2 batteries, based on the **WMTC Stage 3** test cycle.

Charging is fast and flexible: just **1.5 hours** with the **optional fast charger**, **3.5 hours** with the **standard charger**, and just **30 minutes** to go from **20% to 100%** with the **6.6 kW Super Fast Charger**.

**30** Min - 0% to 80% (Optional)  
Super fast charger 6.6kW

**1.5** Hours (Optional)  
Fast charging time

**3.5** Hours (Standard)  
Charging time

**107** Km\* (L3e - 2 batteries)  
Range (\*WMTC Stage 3)

**74v 30Ah** NCM  
Battery



## Battery



74V/30Ah

## Chargers



Standard charger  
74V 10A



Optional charger\*  
74V 20A

## Super fast charger 6.6 kW



# CYCLING

## Climbing angle

The **TS Street Hunter S** is **agile** and **powerful**, maintaining top performance even on **steep inclines up to 19°**. Conquer any road with ease.

**19°** Steep inclines  
Climbing Angle



## Hydraulic damping suspensions

The advanced suspension system ensures **optimal comfort** and **control**, adapting seamlessly to **any terrain**. Ride smoothly in every situation.

Front suspension  $\varnothing 35\text{mm}$



Rear suspension  $\varnothing 34\text{mm}$



# SAFETY



**Rear caliper Ø240mm**

**High-performance ABS**, ensuring maximum safety and control in all braking conditions.



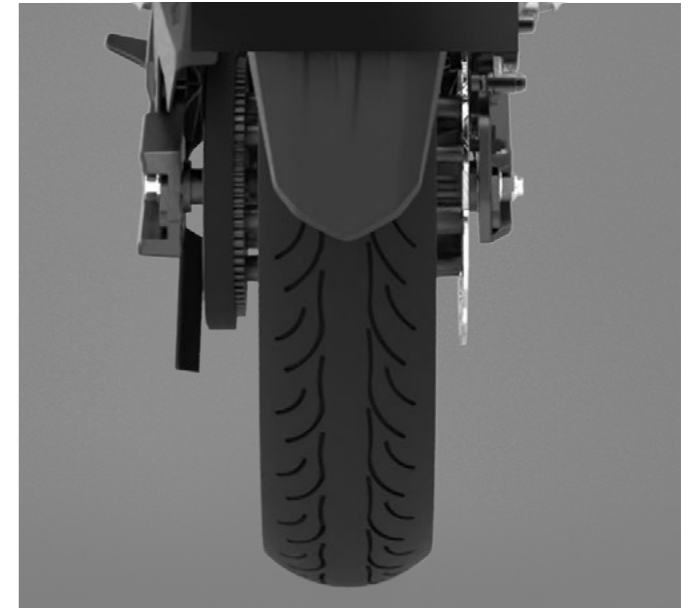
**Front caliper Ø280mm**

**High-performance ABS**, ensuring maximum safety and control in all braking conditions.



**Tyre**

The tires have a **high-density texture**, which provides **strong ground grip** and **high safety**.



**TCS**

**Traction Control System (TCS)** optimizes **grip and stability**, preventing wheel slip for a safer and more controlled ride in all conditions.

# TECHNOLOGY



## Front LED

The **TS Street Hunter S's full LED** front headlights ensure maximum visibility and safety in all conditions. The front headlamp **Lighting class D** provides powerful illumination with an **intensity of 40.000 cd**.



## Rear LED

High brightness **LED taillight**. Position light, brake light and indicator light integrated.



## LCD

Clear and intuitive **LCD display** designed to provide the rider with all essential information in real time.



## USB

**USB charging port**, designed to provide maximum convenience during trip.

# ERGONOMICS



## Ergonomics redefined: comfort meets sportiness

**TS Street Hunter S** is designed to deliver the **perfect balance between comfort and sportiness**. Its carefully engineered ergonomics ensure a **practical and relaxed riding position**, reducing strain on the back even during long journeys. At the same time, its dynamic stance **preserves the thrill and agility** of a true motorcycle. Developed by our team of expert engineers and rigorously tested, the bikes allows **you to ride for hours**, enjoying both the adrenaline of the road and the pleasure of effortless control.

## Extra comfort



## KEY OPTIONAL PARTS



Front bumper



Motorcycle cover



Rear good shelf



Phone holder

## VMOTO BATTERY TECHNOLOGY



### Battery technology and life cycle: what you need to know

Vmoto vehicles use **lithium-ion batteries**, a highly efficient rechargeable technology widely adopted in **electronics, EVs, and aerospace**. An **EV** uses up to **90%** of its energy for movement, while an **ICEV** uses only about **15%**, with most lost as heat.

**Lithium battery disposal is a key issue**, but **recycling efforts are growing**. After **8-10 years**, batteries can be **reused or recycled**, recovering up to **95%** of critical materials like cobalt and nickel.



### Here's why to choose Vmoto!

- 1** Long battery range
- 2** Fast charging battery
- 3** The cost of recharging is low
- 4** Extended battery life cycle
- 5** Closed-loop battery recycling



# TECHNICAL INFORMATION

**TSE**  
STREET HUNTER



<b>Homologation</b>	L3e	<b>LxWxH</b>	2064 mm*780 mm*1114 mm
<b>Rated power</b>	4.0 kW	<b>Wheelbase</b>	1378 mm
<b>Max power</b>	10.0 kW	<b>Ground clearance</b>	173 mm
<b>Battery model</b>	NCM lithium battery	<b>Seat height</b>	750 mm
<b>Battery capacity</b>	74 V/30 Ah (1 or 2 batteries)	<b>Rims</b>	Fr. 2.5-17   Rr. 3.5-17
<b>Charging time</b>	3 h/PCS	<b>Tyres</b>	Fr. 100/80-17 Rr. 120/70-17
<b>Charging power</b>	0.84 kW	<b>Suspension</b>	Hydraulic damping system
<b>Range*</b>	100 Km* (2 PCS.)	<b>Weight</b>	124 kg (without battery)
<b>Max speed</b>	105 Km/h	<b>Brakes</b>	ABS + TCS
<b>Climbing angle</b>	19°	<b>Colours</b>	Black, Red

Attention: The photos and technical information contained in this catalog may refer to prototypes subject to changes during production and are for purely illustrative and reference purposes, therefore they are not binding for Vmoto International. Vmoto cannot be held responsible for any printing and/or translation errors. This catalog is transnational and therefore some products may not be available and/or their characteristics may vary according to local laws. Not all colors and versions are available in every country. Vmoto reserves the right to make changes and improvements to any product without prior notice or to make such changes to products already sold. Further characteristics of the products are contained in the relevant user manuals. The products represented are not final versions and are therefore subject to significant changes at the discretion of Vmoto without notice. The photographs published in this catalog show only professional drivers in controlled road conditions. Do not try to imitate this driving behavior as it could be dangerous for you or other people on the road. This catalogue, including, but not limited to, trademarks, logos, texts, images, graphics and table of contents, constitutes the intellectual property of Vmoto, or in any case Vmoto has the right to reproduce it; Any total or partial reproduction, modification or other use of the catalog or its contents is prohibited, including publication on the Internet without the prior written consent of Vmoto. Actual battery consumption may vary based on many factors, including, but not limited to, riding style, maintenance performed, weather conditions, surface characteristics, tire pressure, load, rider weight and the passenger, the accessories. Curb weights are considered with all operating fluids, standard equipment and battery. For more information visit [www.vmoto.com](http://www.vmoto.com).

\*WMTC Stage 3.



**ELECTRIFY  
YOUR WORLD**

[vmoto.com](http://vmoto.com)